



**Enid Pretorius**

Non-Principal Property Practitioner  
Registered with PPRA  
(FFC 015 435 8)

082 773 8064

enid.pretorius@harcourts.co.za



**Francois Joubert**

Non-Principal Property Practitioner  
Registered with PPRA

(FFC 080 512 9)

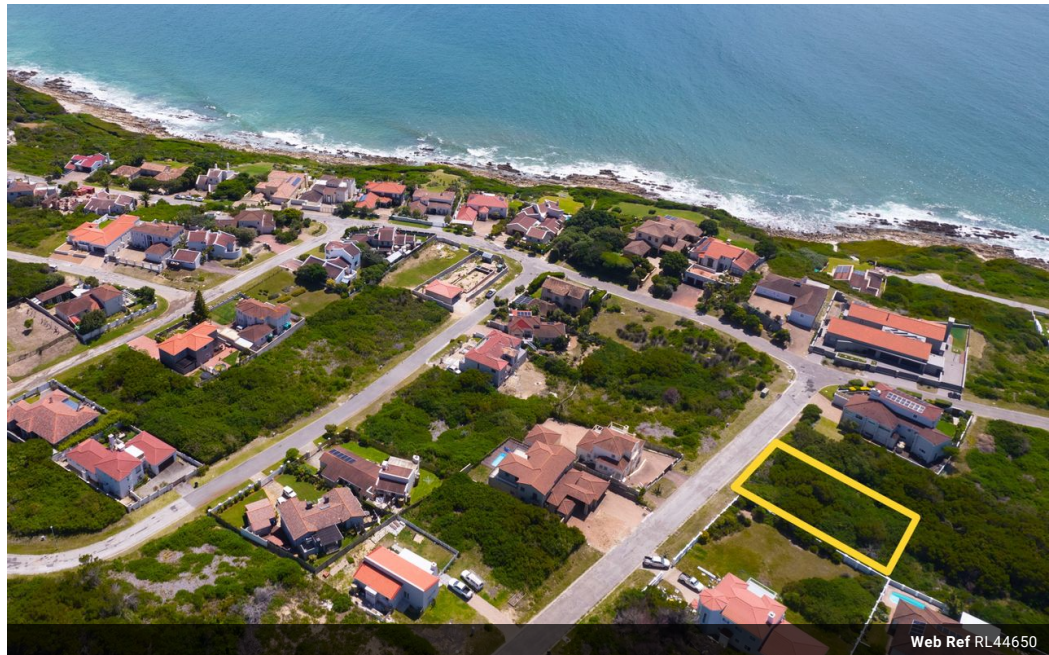
073 898 6528

francois.joubert@harcourts.co.za

Contact Harcourts Oyster (St Francis Bay)

042 2940921

12 Lyme Road South  
Village Shopping Centre  
St Francis Bay  
6312



**R650,000**

**Monthly Bond Repayment** R6,598.99

Calculated over 20 years at 10.75% with no deposit.

**Transfer Costs** R23,730.00 **Bond Costs** R17,680.00

These calculations are only a guide. Please ask your conveyancer for exact calculations.

**Monthly Rates** R203

Prime area, prime spot!

This level plot is situated just a few meters from the water's edge and very close to Port of St Francis. It lies within a tranquil neighbourhood, ideal for a holiday or retirement home. The surrounding area is renowned for its pristine beaches, indigenous bush, and abundant birdlife, making it a nature lover's paradise.

This plot represents a rare opportunity to own a piece of paradise in St Francis Bay. Whether you're looking to build a holiday retreat or a permanent residence, this location offers the perfect blend of natural beauty and coastal living.

Call today to not miss out.

St. Francis Bay, nestled in the Eastern Cape of South Africa, is a coastal gem known for its serene beauty, thriving marine life, and a lifestyle that effortlessly blends adventure with relaxation. Divided into three charming areas—The Bay, The...

## Features

