



Lorrin Jarvis

Non-Principal Property
Practitioner
Registered with PPRA
(FFC 120 919 3)
082 388 6213

lorrin.jarvis@harcourts.co.za



Tracy Degoumois

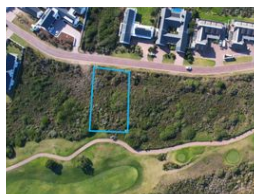
Candidate Property
Practitioner
Registered with PPRA
(FFC 125 368 0)
082 905 9814
tracy.d@harcourts.co.za

Contact Harcourts Oyster (St
Francis Bay)

042 2940921

12 Lyme Road South
Village Shopping Centre
St Francis Bay
6312

UNDER OFFER



R1,500,000

Monthly Bond Repayment R15,228.43

Calculated over 20 years at 10.75% with no deposit.

Transfer Costs R45,785.00 **Bond Costs** R28,990.00

These calculations are only a guide. Please ask your conveyancer for exact calculations.

Monthly Levy R4,700 **Monthly Rates** R850

Luxury Links Living

Don't miss this stunning vacant land position on Jack Nicklaus Drive - close to the 10th Hole and Clubhouse. and a chance to capture exquisite views of the bay. St Francis Links is a golf estate and residential development in St Francis Bay, the Eastern Cape of South Africa. It offers a unique lifestyle opportunity for those who appreciate nature, security and luxury. Here are some reasons why investing in St Francis Links is such a good idea:

- The estate is situated on a stunning stretch of coastline, with panoramic views of the Indian Ocean and the surrounding mountains. The climate is mild and sunny, ideal for outdoor activities and relaxation.
- The golf course is designed by Jack Nicklaus, one of the greatest golfers of all time. It is ranked among the top 10 courses in South Africa and offers a challenging and...

Features

