



Lorrin Jarvis

Non-Principal Property
Practitioner
Registered with PPRA
(FFC 120 919 3)
082 388 6213

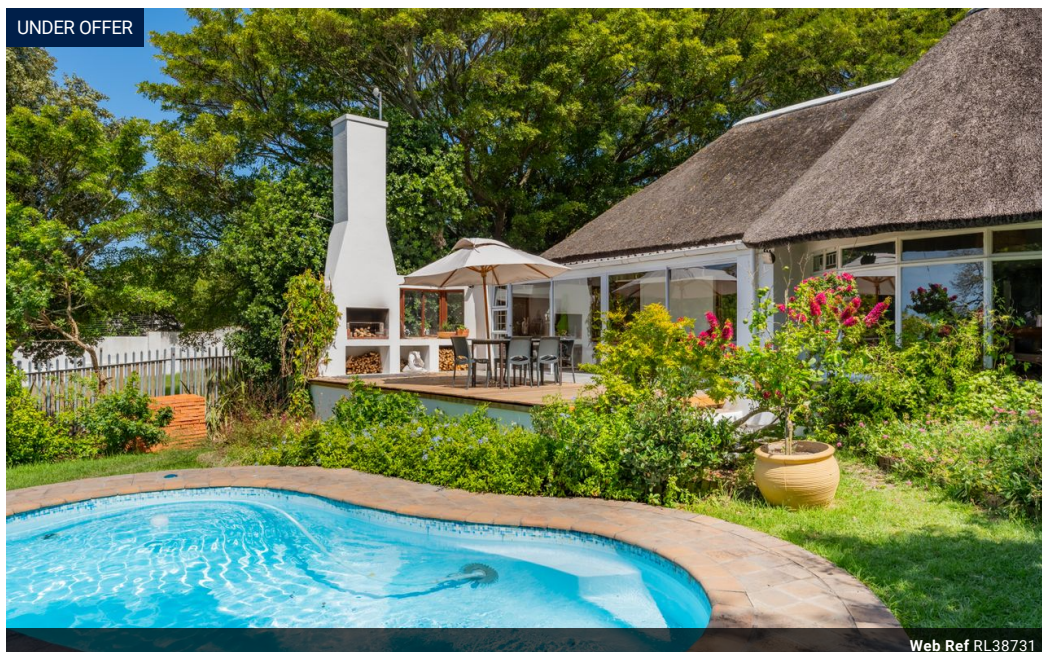
lorrin.jarvis@harcourts.co.za

Contact Harcourts Oyster (St
Francis Bay)

042 2940921

12 Lyme Road South
Village Shopping Centre
St Francis Bay
6312

UNDER OFFER



Web Ref RL38731



R3,800,000

4 2.5 2

Monthly Bond Repayment R38,578.70

Calculated over 20 years at 10.75% with no deposit.

Transfer Costs R256,882.00 **Bond Costs** R49,725.00

These calculations are only a guide. Please ask your conveyancer for exact calculations.

Monthly Rates R3,900

Original St Francis Cottage, sea views and massive erf - grab it now!

Nestled in the heart of the picturesque coastal town of St Francis Bay, this expansive 2,323 square metre property offers a rare opportunity to own one of the area's larger plots. Enveloped by mature trees and lush foliage, the beautifully landscaped garden provides a serene retreat, featuring a tranquil fountain, a spacious backyard, and a sparkling pool—perfect for relaxation or entertaining. A covered stoep with a built-in braai enhances the outdoor living experience, making it ideal for hosting gatherings year-round.

The main residence boasts four generously sized bedrooms and 2.5 bathrooms, designed to accommodate both comfort and functionality. A sunroom, bathed in natural light, creates a cozy nook for winter afternoons, while the inviting TV lounge and dining area, anchored by a wood-burning fireplace, offer warm and...

Features

Pets Allowed	Yes		
Interior		Exterior	Sizes
Bedrooms	4	Garages	Floor Size
Bathrooms	2.5	Carports / Parkings	Land Size
Kitchens	1	Security	
Recep. Rooms	3	Pool	
Furnished	No	Views	
			325m ²
			2,323m ²

