



Lorrin Jarvis

Non-Principal Property Practitioner
Registered with PPRA
(FFC 120 919 3)

082 388 6213

lorrin.jarvis@harcourts.co.za

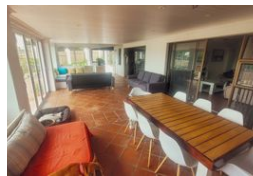
Contact Harcourts Oyster (St Francis Bay)

042 2940921

12 Lyme Road South
Village Shopping Centre
St Francis Bay
6312



Web Ref RL35064



R3,750,000

6 4 2

Monthly Bond Repayment R38,707.06

Calculated over 20 years at 11% with no deposit.

Transfer Costs R251,382.00 **Bond Costs** R49,725.00

These calculations are only a guide. Please ask your conveyancer for exact calculations.

Monthly Rates R1,400

Discover Boundless Potential in the Heart of St. Francis Bay

Dual Listing: Step into a home that offers more than just a place to live—it's a space designed for flexibility, creativity, and connection. Located in the vibrant heart of St. Francis Bay village, this property is perfect for those seeking a versatile layout that can adapt to their lifestyle, whether it's accommodating a large family, joint ownership, or dual-living arrangements.

The home features two distinct wings, each fully equipped with its own open-plan living area and kitchen. These spaces are warm, inviting, and ideal for creating memories with loved ones. Each wing includes three spacious bedrooms and two bathrooms, with the main bedrooms offering private en-suites for a touch of luxury.

A hidden treasure lies upstairs in the form of a sprawling attic space. This blank canvas could become whatever you need—an art...

Features

Interior		Exterior		Sizes	
Bedrooms	6	Garages	2	Land Size	933m ²
Bathrooms	4	Carports / Parkings	2		
Kitchens	2	Security	Yes		
Recep. Rooms	4	Pool	No		
Furnished	No	Views	True		

Extras

Backup Water Covered Patio Dual Living

