



### Enid Pretorius

Non-Principal Property Practitioner  
Registered with PPRA  
(FFC 015 435 8)

082 773 8064

enid.pretorius@harcourts.co.za

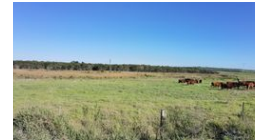
Contact Harcourts Oyster (St Francis Bay)

042 2940921

12 Lyme Road South  
Village Shopping Centre  
St Francis Bay  
6312



Web Ref EFB29796



## R1,650,000

**Monthly Bond Repayment** R17,031.11

Calculated over 20 years at 11% with no deposit.

**Transfer Costs** R52,453.00    **Bond Costs** R30,875.00

These calculations are only a guide. Please ask your conveyancer for exact calculations.

### Small holding with water and electricity!

Excluding VAT!

This lovely piece of land has already Eskom power and 2 boreholes!

The one registered borehole, extracting 28 000 litres per hour (for irrigation) and the other one extracting 4 000 litre water per hour for drinking water. The land has a 25 KVA 3 phase Eskom power supply.

Piece of land is already fully fenced and have 3 camps. Sand to Sandy loam soil type. All the alien plants were removed about 4.5 years ago, and lovely grass pastures are planted. Kikuyu, Cocksfoot, Rye grass, Red Clover and Bronson grass is mixer that is planted. About 1.2 hectares of the approximately 6.2 hectares are wetland with lovely sounds of harmonious melodies of singing frogs.

Make sure not to miss out on this property.

Discover the idyllic lifestyle of St Francis Bay and its surroundings, located in the Eastern Cape, South...

## Features

