



Sandra Hattingh

Non-Principal Property
Practitioner
Registered with PPRA
(FFC 065 109 2)

082 775 3155

sandra.hattingh@harcourts.co.za

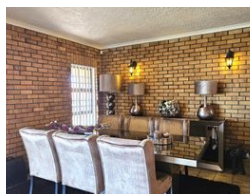
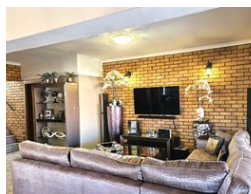
Contact Harcourts Oyster
(Jeffreys Bay)

042 2932053

101A Da Gama Road
Jeffreys Bay
6330



Web Ref RL37021



R3,600,000



Monthly Bond Repayment R35,941.68

Calculated over 20 years at 10.5% with no deposit.

Transfer Costs R232,855.00 **Bond Costs** R47,840.00

These calculations are only a guide. Please ask your conveyancer for exact calculations.

Monthly Rates R1,521

Prime Coastal Retreat

This exceptional coastal property presents a fantastic opportunity for various lifestyles—whether you're seeking a spacious family home, a lucrative investment, or a charming guest house or holiday retreat.

Situated in a highly sought-after location, just a short walk from the beach and close to essential amenities, this home offers versatility and comfort in a prime setting.

Boasting 7 bedrooms and 4 bathrooms, the layout is thoughtfully designed for effortless living and entertainment.

Main Residence

First Level:

Open-plan lounge, dining area, and kitchen with a pantry and separate laundry

Seamless indoor-outdoor flow with sliding doors leading to a balcony showcasing breathtaking sea views

Second Level:

Expansive living area featuring a classic built-in bar, perfect for entertaining

Direct access to a spacious balcony,...

Features

Pets Allowed Yes

Interior

Bedrooms	7
Bathrooms	4
Kitchens	2
Recep. Rooms	4
Studies	1
Furnished	No

Exterior

Carports / Parkings	2
Security	No
Pool	No
Views	True

Sizes

Floor Size	474m ²
Land Size	760m ²