



**Sandra Hattingh**

Non-Principal Property Practitioner  
Registered with PPRA  
(FFC 065 109 2)

082 775 3155

sandra.hattingh@harcourts.co.za

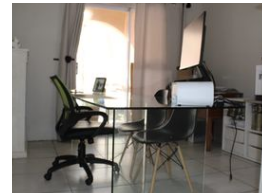
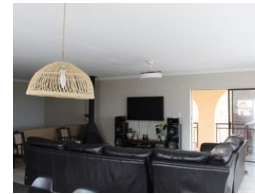
Contact Harcourts Oyster  
(Jeffreys Bay)

042 2932053

101A Da Gama Road  
Jeffreys Bay  
6330



Web Ref RL35268



### R3,800,000

5 4 2

**Monthly Bond Repayment** R39,223.16

Calculated over 20 years at 11% with no deposit.

**Transfer Costs** R256,882.00 **Bond Costs** R49,725.00

These calculations are only a guide. Please ask your conveyancer for exact calculations.

**Monthly Rates** R1,200

### A Rare Gem

Discover the charm and versatility of this delightful double-storey property. With a spacious main house and two separate flats, this home is perfect for families, extended living arrangements, or rental income opportunities. The flats have private entrances but can easily be incorporated into the main house if desired.

#### Main House Highlights

Lower Level:

2 spacious bedrooms

1 full bathroom

Open Plan Living:

Generous family room with a built-in fireplace

Dining and indoor braai area featuring a built-in braai

Large windows and sliding doors leading to a balcony with breathtaking sea views

Kitchen:

Modern open-plan design with granite countertops

### Features

**Pets Allowed** Yes

#### Interior

Bedrooms	5
Bathrooms	4
Kitchens	3
Recep. Rooms	4
Studies	1
Furnished	No

#### Exterior

Garages	2
Carports / Parkings	3
Security	Yes
Pool	Yes
Views	True

#### Sizes

Land Size	679m <sup>2</sup>
-----------	-------------------