



Sandra Hattingh
Non-Principal Property
Practitioner
Registered with PPRA
(FFC 065 109 2)
082 775 3155

sandra.hattingh@harcourts.co.za

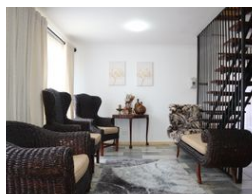
Contact Harcourts Oyster
(Jeffreys Bay)

042 2932053

101A Da Gama Road
Jeffreys Bay
6330



Web Ref RL33428



R2,795,000

3 3 2

Monthly Bond Repayment R28,375.65

Calculated over 20 years at 10.75% with no deposit.

Transfer Costs R141,487.00 **Bond Costs** R40,300.00

These calculations are only a guide. Please ask your conveyancer for exact calculations.

Monthly Rates R1,180

Exceptional Multi Level Art Deco Inspired Family Home

Discover an exceptional, art deco-inspired two-story residence that combines ample space with timeless charm. Unwind in the comfort of a jacuzzi nestled within a sheltered outdoor area. As you enter the vibrant first floor, you'll be greeted by unique touches and artistic, colorful décor that set this level apart.

Your eye is immediately drawn to the open-plan kitchen, dining, and living area, where functionality meets style with finesse. The meticulous interior design brings a distinctive flair throughout the home. Additionally, this floor features two generously sized en-suite bedrooms, offering both comfort and privacy.

As you make your way to the next level, a world of luxury unfolds. Here, a spacious open-plan area awaits, thoughtfully designed to cater to fitness, hobbies, and entertainment. Adjacent to this is a cozy...

Features

Pets Allowed		Yes			
Interior		Exterior		Sizes	
Bedrooms	3	Garages	2	Floor Size	384m²
Bathrooms	3	Carports / Parkings	2	Land Size	700m²
Kitchens	1	Security	Yes		
Recep. Rooms	4	Pool	No		
Studies	1	Views	True		
Furnished	No				