



**Sandra Hattingh**  
 Non-Principal Property Practitioner  
 Registered with PPRA (FFC 065 109 2)  
 082 775 3155  
 sandra.hattingh@harcourts.co.za

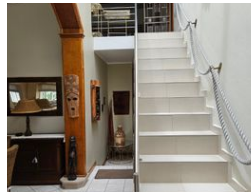
Contact Harcourts Oyster (Jeffreys Bay)

042 2932053

101A Da Gama Road  
 Jeffreys Bay  
 6330



Web Ref RL33031



### R3,600,000

**Monthly Bond Repayment** R37,158.78  
 Calculated over 20 years at 11% with no deposit.

**Transfer Costs** R232,714.00    **Bond Costs** R47,840.00  
 These calculations are only a guide. Please ask your conveyancer for exact calculations.

5    3    2

### Drop Dead Gorgeous

Charming family home, beautifully designed and located in a prime area with breathtaking sea views!

Downstairs features:

- Welcoming entrance
- Open-plan living, dining, and kitchen area
- Convenient scullery
- 4 bedrooms, with 3 opening onto a balcony showcasing stunning views
- Guest bathroom

Upstairs highlights:

- Spacious open-plan entertainment area leading to a sunlit balcony with a built-in braai and expansive sea views
- Main bedroom with en-suite, sharing the same scenic views
- Additional amenities include a double garage, an outdoor bathroom, and an enclosed garden with a cozy boma. This home is packed with personality and charm!

Welcome to the enticing lifestyle of Jeffreys Bay, a coastal paradise in the Eastern Cape, South Africa. As local property specialists covering Jeffreys Bay, Aston Bay, Paradise Beach and the beautiful

### Features

Pets Allowed		Yes			
Interior		Exterior		Sizes	
Bedrooms	5	Garages	2	Floor Size	261m <sup>2</sup>
Bathrooms	3	Security	No		
Kitchens	1	Pool	No		
Recep. Rooms	3	Views	True		
Furnished	No				

#### Extras

Built In Braai Patio Views: Sea / Ocean Locality: Close To Schools Locality: Close To Shops  
 Locality: Close To Transport Living Area: Open Plan Kitchen: Open Plan Kitchen: Scullery Main  
 Bedroom: Double Main Bedroom: Built-in-robe Ensuite: Bath Ensuite: Separate Shower  
 Bedroom 2: Double Bedroom 2: Built-in / Wardrobe Bedroom 3: Double Bedroom 3: Built-in /  
 Wardrobe Bedroom 4: Double Bedroom 4: Built-in / Wardrobe Bedroom 5: Double Main  
 Bathroom: Bath Main Bathroom: Separate Shower Outdoor Living: Garden Garaging /  
 Carparking: Double Lock-up Land Contour: Flat To Sloping Window/door Frames: Aluminium