



Sandra Hattingh
 Non-Principal Property Practitioner
 Registered with PPRA (FFC 065 109 2)
 082 775 3155
 sandra.hattingh@harcourts.co.za

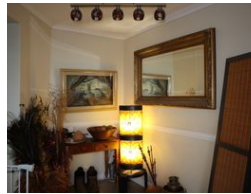
Contact Harcourts Oyster
 (Jeffreys Bay)

042 2932053

101A Da Gama Road
 Jeffreys Bay
 6330



Web Ref RL24850



R4,850,000

7 6 4

Monthly Bond Repayment R50,061.14
 Calculated over 20 years at 11% with no deposit.

Transfer Costs R385,845.00 **Bond Costs** R61,035.00
 These calculations are only a guide. Please ask your conveyancer for exact calculations.

Monthly Rates R1,805

Magnificent Low-Maintenance Family Home

This stunning coastal family home is situated at a prime address. Ascend an impressive staircase to reach the elegant front door, which opens into a welcoming entrance hall. From there, you'll find a spacious TV lounge and dining area, both of which feature sliding doors that open onto a balcony with breathtaking views.

The kitchen is part of the open-plan living and dining area and includes a separate scullery that leads to a charming braai room. The master bedroom, featuring an en-suite bathroom, opens with sliding doors onto a balcony with lovely sea views. Two guest rooms share a bathroom, while another guest room with an en-suite bathroom opens with a sliding door into the garden. From this level, you can also access the flatlet, which has a private entry from the outside. The flatlet includes a spacious main bedroom with...

Features

Pets Allowed Yes

Interior
 Bedrooms 7
 Bathrooms 6
 Kitchens 2
 Recep. Rooms 4
 Furnished No

Exterior
 Garages 4
 Security Yes
 Pool Yes
 Views True

Sizes
 Floor Size 494m²
 Land Size 848m²