



Sandra Hattingh

Non-Principal Property Practitioner
Registered with PPRA
(FFC 065 109 2)

082 775 3155

sandra.hattingh@harcourts.co.za

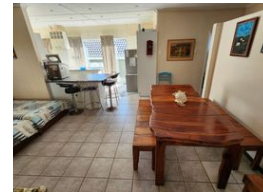
Contact Harcourts Oyster
(Jeffreys Bay)

042 2932053

101A Da Gama Road
Jeffreys Bay
6330



Web Ref RL35210



R1,950,000

5 3 2

Monthly Bond Repayment R20,127.67

Calculated over 20 years at 11% with no deposit.

Transfer Costs R72,206.00 **Bond Costs** R32,760.00

These calculations are only a guide. Please ask your conveyancer for exact calculations.

Monthly Rates R738

Tranquil Coastal Haven

Discover this spacious family home in the scenic Paradise Beach. Imagine owning a property in this tranquil coastal haven, where long stretches of open beaches and peaceful surroundings create an idyllic retreat. This charming suburb offers a perfect blend of serenity and convenience.

Features of the property include:

Open-Plan Living: A seamless flow between the living room, dining area, and kitchen, complete with a scullery and laundry.
Ample Accommodation: Four generously sized bedrooms (main en suite), two bathrooms, and built-in cupboards for ample storage.

Garage: A tandem single garage with additional built-in cupboards for practicality.

Additional Space: A cozy bachelor flatlet featuring one bedroom, a living area, and a bathroom.

Entertainment Area: An enclosed, undercover built-in braai area for year-round...

Features

Pets Allowed Yes

Interior

Bedrooms	5
Bathrooms	3
Kitchens	1
Recep. Rooms	2
Furnished	No

Exterior

Garages	2
Carports / Parkings	3
Security	No
Pool	No
Views	False

Sizes

Floor Size	282m ²
Land Size	694m ²