



Francois Joubert

Non-Principal Property
Practitioner
Registered with PPRA
(FFC 080 512 9)

073 898 6528

francois.joubert@harcourts.co.za



Allan Arnot

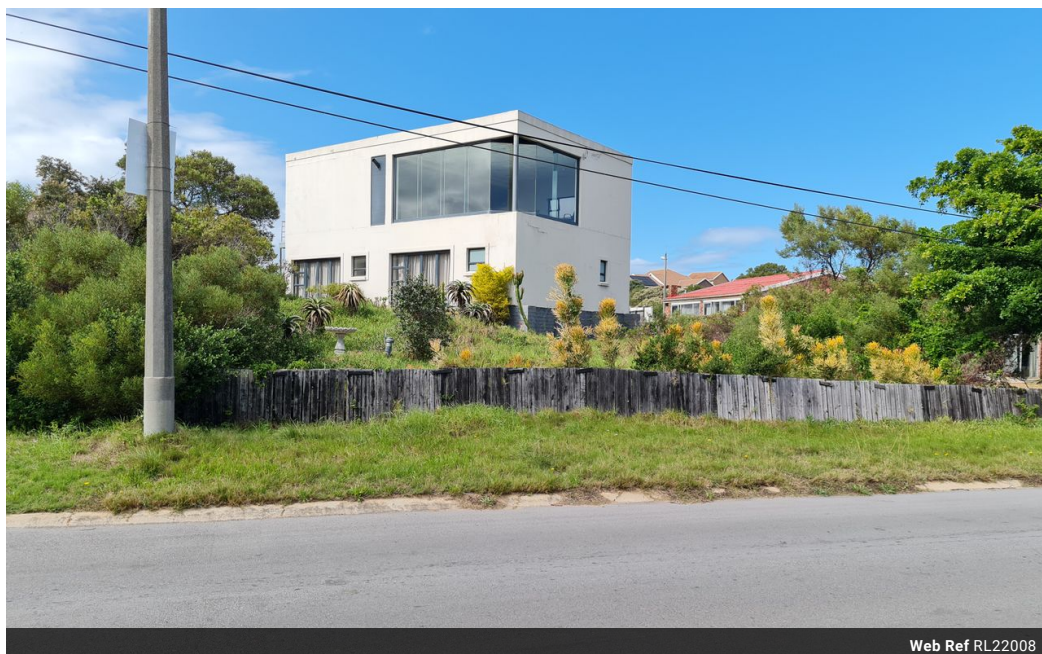
078 422 1630

allan.arnot@harcourts.co.za

Contact Harcourts Oyster
(Jeffreys Bay)

042 2932053

101A Da Gama Road
Jeffreys Bay
6330



Web Ref RL22008



R1,600,000



2



3



2

Monthly Bond Repayment R16,243.66

Calculated over 20 years at 10.75% with no deposit.

Transfer Costs R48,785.00

Bond Costs R28,990.00

These calculations are only a guide. Please ask your conveyancer for exact calculations.

Large Partially Completed Abode with Beautiful Landscape Views – Paradise Beach, Jeffreys Bay

An interesting project for you. The basics are in place, but the home will need your flair and dedication to bring this vision to completion. Large uncomplicated spaces enable you to decide on your own partitioning of the interior, especially on the upper level. Provision has been made for an elevator however it has not been installed. There is a plan to build a staircase, connecting the upper and lower levels internally, should you prefer not to install a lift.

The current design entails the lounge, dining area, kitchen & small ablution facility on the upper level. The most amazing landscape views over Paradise Beach are experienced from this vantage point. You can also watch small aircraft taking off and landing from here, as the airstrip is across the roadway, making for some interesting entertainment!

The lower level...

Features

Pets Allowed Yes

Interior

Bedrooms	2
Bathrooms	3
Kitchens	3
Recep. Rooms	3
Furnished	No

Exterior

Garages	2
Carports / Parkings	2
Security	No
Pool	No
Views	True

Sizes

Land Size	720m²
-----------	-------