



Sandra Hattingh

Non-Principal Property
Practitioner
Registered with PPRA
(FFC 065 109 2)

082 775 3155

sandra.hattingh@harcourts.co.za

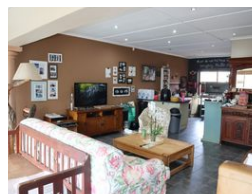
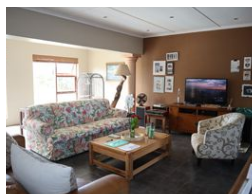
Contact Harcourts Oyster
(Jeffreys Bay)

042 2932053

101A Da Gama Road
Jeffreys Bay
6330



Web Ref RL43590



R2,500,000

3 3 2

Monthly Bond Repayment R25,380.72

Calculated over 20 years at 10.75% with no deposit.

Transfer Costs R115,720.00 **Bond Costs** R38,415.00

These calculations are only a guide. Please ask your conveyancer for exact calculations.

Monthly Rates R1,145

Charming Family Home in Tranquil Wavecrest Setting

Nestled in a peaceful part of Wavecrest, this inviting family home offers a perfect blend of rustic charm and modern convenience. Boasting 3 spacious bedrooms and 3 bathrooms, the home features an open-plan lounge, dining, and kitchen area that creates a warm and welcoming atmosphere.

A generously sized office with its own entrance, complete with a shower and toilet, provides the ideal space to work from home – or can easily be converted into a self-contained garden flat.

Step outside to enjoy a sparkling swimming pool, while a double garage offers secure parking and additional storage.

Upstairs, you'll find a large entertainment area with a built-in braai, opening onto a balcony perfect for enjoying sunset views.

Additional features include:

1 x 5000L water tank

6 solar panels

5KW inverter with battery backup

Features

Pets Allowed Yes

Interior

Bedrooms	3
Bathrooms	3
Kitchens	1
Recep. Rooms	2
Studies	1
Furnished	No

Exterior

Garages	2
Security	Yes
Pool	Yes
Views	False

Sizes

Floor Size	304m ²
Land Size	600m ²

Extras

Laundry Patio Locality: Close To Schools Locality: Close To Shops Locality: Close To Transport
Living Area: Open Plan Kitchen: Open Plan Main Bedroom: Double Bedroom 2: Double Bedroom
3: Double Additional Rooms: Office / Study Additional Rooms: Pool / Billiard Outdoor Living:
Entertainment Area Outdoor Living Entertainment Area: Covered Pool: Inground Garaging /
Carparking: Double Lock-up Land Contour: Flat Window/door Frames: Aluminium Ensuite:
Separate Shower Main Bathroom: Bath