



**Sandra Hattingh**

Non-Principal Property Practitioner  
Registered with PPRA  
(FFC 065 109 2)

082 775 3155

sandra.hattingh@harcourts.co.za

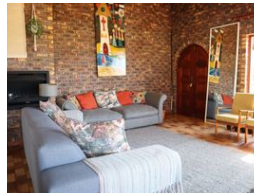
Contact Harcourts Oyster  
(Jeffreys Bay)

042 2932053

101A Da Gama Road  
Jeffreys Bay  
6330



Web Ref RL27682



### R2,995,000

4 2 2

**Monthly Bond Repayment** R30,914.04

Calculated over 20 years at 11% with no deposit.

**Transfer Costs** R159,661.00 **Bond Costs** R42,185.00

These calculations are only a guide. Please ask your conveyancer for exact calculations.

**Monthly Rates** R960

### Fabulous Holiday Home

This beautiful vacation home, with distant sea views, offers a serene escape featuring 4 bedrooms with built-in cupboards and 2 full bathrooms, plus a convenient guest toilet.

The spacious main bedroom opens directly to the charming garden through sliding doors, creating a seamless connection to the outdoors.

Designed with an open-concept layout, the home combines the lounge, dining, and kitchen areas into one harmonious space that flows effortlessly into a covered entertainment area—perfect for hosting guests.

The enclosed garden provides a safe, pet-friendly environment, ideal for children to play and enjoy.

Welcome to the enticing lifestyle of Jeffreys Bay, a coastal paradise in the Eastern Cape, South Africa. As local property specialists covering Jeffreys Bay, Aston Bay, Paradise Beach and the beautiful Marina...

### Features

**Pets Allowed** Yes

#### Interior

Bedrooms	4
Bathrooms	2
Kitchens	1
Recep. Rooms	2
Furnished	No

#### Exterior

Garages	2
Security	No
Pool	No
Views	True

#### Sizes

Floor Size	287m <sup>2</sup>
Land Size	800m <sup>2</sup>

#### Extras

Laundry Built In Braai Patio Views: Sea / Ocean Locality: Close To Schools Locality: Close To Shops Locality: Close To Transport Living Area: Open Plan Kitchen: Open Plan Main Bedroom: Double Main Bedroom: Built-in-robe Ensuite: Separate Shower Bedroom 2: Double Bedroom 2: Built-in / Wardrobe Bedroom 3: Double Bedroom 3: Built-in / Wardrobe Bedroom 4: Double Bedroom 4: Built-in / Wardrobe Main Bathroom: Bath Main Bathroom: Separate Shower Additional Rooms: Guest Toilet Outdoor Living: Entertainment Area Outdoor Living Entertainment Area: Covered Outdoor Living: Garden Garaging / Carparking: Double Lock-up Land Contour: Flat Condition: Good Water Supply: Town Supply Sewerage: Mains House Style: Other Window/door Frames: Timber