



Sandra Hattingh

Non-Principal Property
Practitioner
Registered with PPRA
(FFC 065 109 2)

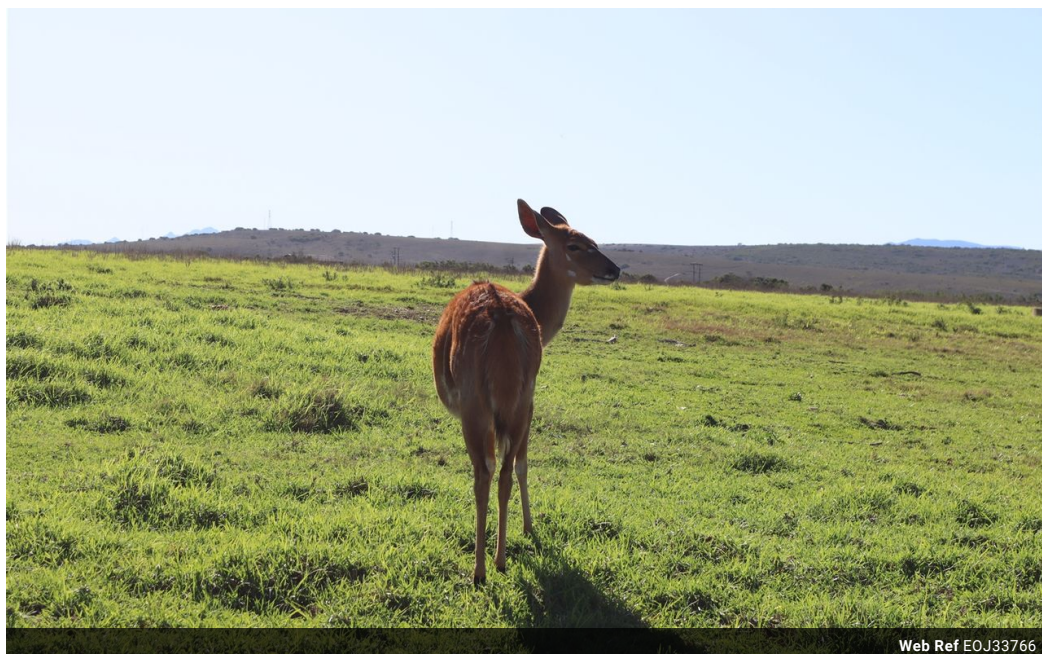
082 775 3155

sandra.hattingh@harcourts.co.za

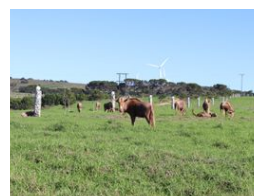
Contact Harcourts Oyster
(Jeffreys Bay)

042 2932053

101A Da Gama Road
Jeffreys Bay
6330



Web Ref EOJ33766



R1,207,500

Monthly Bond Repayment R12,055.44

Calculated over 20 years at 10.5% with no deposit.

Transfer Costs R35,019.00 **Bond Costs** R27,105.00

These calculations are only a guide. Please ask your conveyancer for exact calculations.

Twin Valley Nature Development

Experience the wonder of Twin Valley Nature Development—an incredible opportunity that will leave you amazed. Imagine a world where clean water, abundant wildlife, green living, and indigenous forests are right at your doorstep. This development offers more than just a place to live; it presents an exceptional investment opportunity.

Located a mere 7km from Jeffreys Bay, and with easy access to Port Elizabeth in just 45 minutes and the beginning of the Garden Route in 60 minutes, Twin Valley Nature Development boasts an enviable location.

Our vast plots range from 2332m² to 7,9548ha, providing ample space for you to create your dream retreat. Each plot features paddock fencing, ensuring a harmonious blend of nature and security.

The development offers incredible value for money and ensures your peace of mind with 24-hour...

Features

