



Sandra Hattingh
Non-Principal Property Practitioner
Registered with PPRA (FFC 065 109 2)
082 775 3155
sandra.hattingh@harcourts.co.za

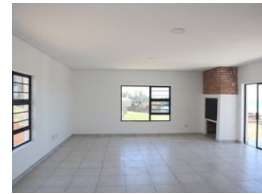
Contact Harcourts Oyster (Jeffreys Bay)

042 2932053

101A Da Gama Road
Jeffreys Bay
6330



Web Ref EOJ32224



R2,895,000



Monthly Bond Repayment R29,881.85
Calculated over 20 years at 11% with no deposit.

Transfer Costs R151,655.00 **Bond Costs** R42,185.00
These calculations are only a guide. Please ask your conveyancer for exact calculations.

Monthly Rates R1,200 **Special Levy** R400

Ideal Family Homes In a Secure Estate

This brand-new development offers an interesting range of 44 architecturally designed, freehold, full-title, spacious family homes. Set in the tranquil beauty of the surfing village of Jeffreys Bay, this new secure Lifestyle Estate, called FigTree welcomes you to exceptional estate living, both affordable and luxurious. Each home is free-standing and full-title with unrestricted ocean views, designed with incredible attention to detail, and stylish interiors, ideal for the modern family. Boasting an open plan layout and generous proportions throughout.

- The floor plan consists of:
- Light-filled living space and dining area
 - Braai room with built-in braai
 - Stylish kitchen with plenty of workspace and separate scullery
 - 3 Elegant bedrooms
 - 3 Bathrooms
 - Exterior restroom
 - Double garage with direct access.

FIG TREE...

Features

Pets Allowed		Yes			
Interior		Exterior		Sizes	
Bedrooms	3	Garages	2	Floor Size	240m ²
Bathrooms	3	Security	No	Land Size	622m ²
Kitchens	1	Pool	No		
Recep. Rooms	2	Views	True		
Furnished	No				

Extras

Locality: Close To Beach Locality: Close To Schools Locality: Close To Shops Locality: Close To Transport Living Area: Open Plan Garaging / Carparking: Double Lock-up Garaging / Carparking: Off Street Window/door Frames: Aluminium House Style: Lifestyle Views: Private Views: Sea / Ocean Kitchen: Modern Kitchen: New Kitchen: Scullery Main Bedroom: Double Main Bedroom: Walk-in-robe Ensuite: Separate Shower Bedroom 2: Double Bedroom 2: Built-in / Wardrobe Bedroom 3: Double Bedroom 3: Built-in / Wardrobe Main Bathroom: Separate Shower Outdoor Living: Entertainment Area Outdoor Living Entertainment Area: Covered