



Sandra Hattingh

Non-Principal Property
Practitioner
Registered with PPRA
(FFC 065 109 2)

082 775 3155

sandra.hattingh@harcourts.co.za

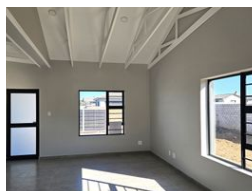
Contact Harcourts Oyster
(Jeffreys Bay)

042 2932053

101A Da Gama Road
Jeffreys Bay
6330



Web Ref RL44460



R2,395,000

3 2 2

Monthly Bond Repayment R24,314.73

Calculated over 20 years at 10.75% with no deposit.

Transfer Costs R105,152.00 **Bond Costs** R36,530.00

These calculations are only a guide. Please ask your conveyancer for exact calculations.

Monthly Rates R1,000

A Signature Masterpiece in the sought-after Fountains Estate

Step into another exceptional creation by one of the area's most respected developers—renowned for designing homes that blend modern elegance with practical comfort. This latest offering proudly carries his unmistakable mark, standing out among the many new homes in the popular Fountains Estate.

The word most often used to describe his homes? Stunning. And this one is no exception.

This beautifully designed residence is a flawless fusion of style, space, and functionality—hallmarks of this developer's work. From the moment you enter, you're welcomed by high-volume ceilings and expansive open-plan living areas that flow seamlessly into an indoor braai area. It's a home tailor-made for entertaining year-round, impressing guests and creating unforgettable family moments.

Contemporary finishes elevate every room, including the...

Features

Pets Allowed		Yes			
Interior		Exterior		Sizes	
Bedrooms	3	Garages	2	Floor Size	170m²
Bathrooms	2	Carports / Parkings	2	Land Size	640m²
Kitchens	1	Security	Yes		
Recep. Rooms	2	Pool	No		
Furnished	No	Views	False		