



Sandra Hattingh
Non-Principal Property
Practitioner
Registered with PPRA
(FFC 065 109 2)
082 775 3155

sandra.hattingh@harcourts.co.za

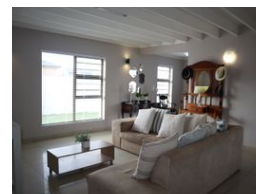
Contact Harcourts Oyster
(Jeffreys Bay)

042 2932053

101A Da Gama Road
Jeffreys Bay
6330



Web Ref EOJ33893



R2,820,000

4 3 2

Monthly Bond Repayment R28,629.46

Calculated over 20 years at 10.75% with no deposit.

Transfer Costs R145,655.00 **Bond Costs** R42,185.00

These calculations are only a guide. Please ask your conveyancer for exact calculations.

Monthly Rates R1,119

Modern, Executive, Luxury Lifestyle

This stunning executive-style home features a double storey design with modern aesthetics. The house is plastered and boasts four bedrooms and three bathrooms. The master bedroom is generously sized and includes a spacious en-suite bathroom and a walk-in closet. The guestroom also has its own en-suite bathroom. All the rooms are large and have built-in wardrobes, while two feature desks.

The open-plan kitchen and living areas are beautifully designed and exude a sense of light and openness. The dining area is equipped with a built-in braai and seamlessly connects to a balcony through stacker doors. The house is adorned with high-quality finishes, enhancing its appeal.

As you enter the home, the entrance hall adds a special touch and a spacious hallway with a safety door entrance is adorned with built-in cupboards. This...

Features

Pets Allowed Yes

Interior

Bedrooms	4
Bathrooms	3
Kitchens	1
Recep. Rooms	3
Furnished	No

Exterior

Garages	2
Security	No
Pool	No
Views	False

Sizes

Floor Size	391m ²
Land Size	617m ²

Extras

Alarm System House Style: Lifestyle Locality: Close To Schools Locality: Close To Shops
Locality: Close To Transport Living Area: Open Plan Kitchen: Modern Kitchen: Open Plan
Kitchen: Double Sink Kitchen: Finish Kitchen Finish: Granite Main Bedroom: Double Main
Bedroom: Walk-in-robe Ensuite: Bath Ensuite: Separate Shower Bedroom 2: Double Bedroom 2:
Built-in / Wardrobe Bedroom 3: Double Bedroom 3: Built-in / Wardrobe Bedroom 4: Double
Bedroom 4: Built-in / Wardrobe Bedroom 4: Additional Info Main Bathroom: Bath Main
Bathroom: Separate Shower Additional Rooms: Family Window Coverings: Blinds Insulation:
Ceiling Heating / Cooling: Electric Outdoor Living: Garden Garaging / Carparking: Double Lock-
up Land Contour: Flat Condition: Excellent Window/door Frames: Aluminium Water Supply:
Town Supply Sewerage: Mains