



**Sandra Hattingh**  
 Non-Principal Property Practitioner  
 Registered with PPRA (FFC 065 109 2)  
 082 775 3155  
 sandra.hattingh@harcourts.co.za

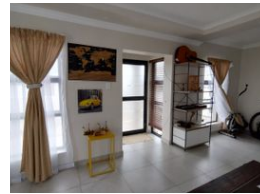
Contact Harcourts Oyster (Jeffreys Bay)

042 2932053

101A Da Gama Road  
 Jeffreys Bay  
 6330



Web Ref EOJ33428



R2,150,000

3 2 2

**Monthly Bond Repayment** R22,192.05  
 Calculated over 20 years at 11% with no deposit.

**Transfer Costs** R86,947.00 **Bond Costs** R34,625.00

These calculations are only a guide. Please ask your conveyancer for exact calculations.

**Monthly Rates** R750

### Upmarket Home

This lovely livable family home is situated on a corner stand in the high-growth area, Fountains Estate. Offering 3 bedrooms, 2 bathrooms and an expansive open plan lounge and dining area. A carefully planned kitchen has loads of convenient work areas. Modern and high-end finishes throughout. Double garage and walled. Add this to your viewing portfolio now!

Welcome to the enticing lifestyle of Jeffreys Bay, a coastal paradise in the Eastern Cape, South Africa. As local property specialists covering Jeffreys Bay, Aston Bay, Paradise Beach and the beautiful Marina Martinique, we at Harcourts take pride in our expertise in residential, agricultural, and commercial real estate sales and rentals. Whatever your dream property may be - luxury beachfront homes, tranquil Marina Martinique residences, farms, small holdings, sectional...

### Features

**Pets Allowed** Yes

#### Interior

Bedrooms 3  
 Bathrooms 2  
 Kitchens 1  
 Furnished No

#### Exterior

Garages 2  
 Security No  
 Pool No  
 Views False

#### Sizes

Land Size 617m<sup>2</sup>

#### Extras

Living Area: Open Plan Kitchen: Open Plan Main Bedroom: Double Main Bedroom: Built-in-robe  
 Ensuite: Separate Shower Bedroom 2: Double Bedroom 2: Built-in / Wardrobe Bedroom 3:  
 Double Bedroom 3: Built-in / Wardrobe Main Bathroom: Bath Main Bathroom: Separate Shower  
 Locality: Close To Schools Locality: Close To Shops Locality: Close To Transport Kitchen:  
 Modern Kitchen: Double Sink Garaging / Carparking: Double Lock-up Land Contour: Flat  
 Window/door Frames: Aluminium

