



Shirley Gradwell
Non-Principal Property
Practitioner
Registered with PPRA
(FFC 083 352 3)
083 656 3999

shirley.gradwell@harcourts.co.za

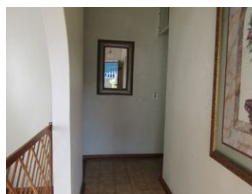
Contact Harcourts Oyster
(Jeffreys Bay)

042 2932053

101A Da Gama Road
Jeffreys Bay
6330



Web Ref RL44045



R1,495,000

3 2 2

Monthly Bond Repayment R15,177.67

Calculated over 20 years at 10.75% with no deposit.

Transfer Costs R45,635.00 **Bond Costs** R28,990.00

These calculations are only a guide. Please ask your conveyancer for exact calculations.

Monthly Rates R617

Your New Address!

Terrific opportunity in sought-after Humansdorp Neighbourhood

Don't miss this charming and spacious face brick family home offering great potential to modernize and make your own. Featuring 3 comfortable bedrooms and 2 bathrooms (main en-suite), this property is perfect for family living.

The welcoming entrance hall flows into a sunny, generously sized main lounge. A large country-style kitchen sits at the heart of the home, complete with a scullery and laundry area. It opens seamlessly to the dining space and a second living/TV room—ideal for easy entertaining.

Enjoy year-round gatherings in the dedicated braai and entertainment room, which offers direct access to both the kitchen and the double garage with remote-controlled doors.

Outside, you'll find a private, neatly maintained, and fully walled back garden with side...

Features

Pets Allowed		Yes	
Interior		Exterior	
Bedrooms	3	Garages	2
Bathrooms	2	Security	Yes
Kitchens	1	Pool	No
Recep. Rooms	3	Views	False
Furnished	No		
		Sizes	
		Floor Size	210m²
		Land Size	1,140m²

Extras

Alarm System Built In Braai Breakfast Nook Electric Garage Laundry Open Plan Kitchen
Residential Wendy House Carpets Tiled Floors ADSL